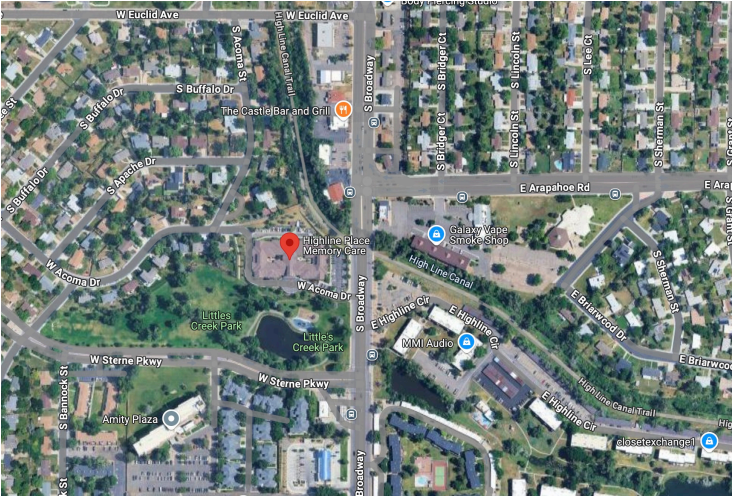


Highline Place



6767 S Broadway Littleton, Colorado 80122

Highline Place



Highline Place is a memory care community. The community is divided into east and west sections. Each section has a common area; residents will eat, socialize, and attend community events in the common areas.

We will meet outside at the main entrance; please do not go into the building individually; it is a locked community, and the staff prefers that we all enter together. To the left of the entrance in the lobby is a conference room/private dining room. Usually, that room is reserved for us to use throughout the shift.

WIFI: Highline Place Guest | Passcode: @hlp6767

Resident's charts:

West – **Blue folders** (100s)

East – **Green folders** (200s)

The director of nursing will provide us with residents' charts for your assignments.

An important note about the words we use:

Please do not call the communities 'facilities.' The staff from these communities find this verbiage offensive. (We found this out the hard way and do not want you in that position.)

Also, please do not call the residents 'patients.' This is their home. They are not in a hospital and will take offense to this phrasing.

Please do not park in the parking lot on site; please park on W. Sterne Parkway, street parking, across the pond (see map).

There is a pathway to the facility.

